

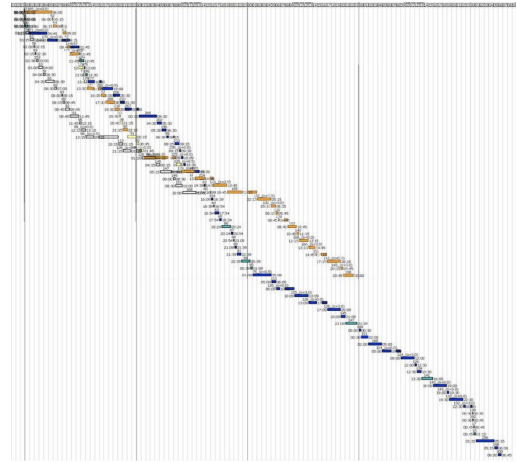
# Aurora Scheduling Beta Partner Program

July 2020

## Product Overview

Aurora is the world's leading intelligent planning and scheduling software solution used at hundreds of sites over the last 15 years; now available as a Primavera P6 plug-in. Construction scheduling is inherently complicated and dynamic. Many General Contractors use scheduling software as a documentation tool to mark when actuals were completed and communicate updates with owners. **Aurora will**

**allow you to transform your Primavera schedule into a proactive, automated scheduling tool** to save you project completion time, reduce costs, and increase utilization by applying easy-to-use technology to augment your professional scheduling staff.



## Beta Partner Program Benefits

We are looking for partner companies to be first-to-market integrations. Potential partners will be evaluated for project complexity, disposition to innovation, and industry vertical use case.

Beta partners will:

- Gain early access to the powerful Aurora plug-in to simplify schedule optimization
- Have an engineer on-site during implementation with on-site training
- Have bi-weekly on-site/virtual meetings for data gathering (suggestions and discussion)
- Enter at a special price (90% discount) with special discount in perpetuity
- Be provided with a wrap-up closure report with impact findings and ROI analysis
- Be featured as a prominent case-study with publicity to existing clients, provided with free marketing collateral, and partner for papers/presentations at industry conferences

## Existing and Future Features

Aurora will significantly improve project efficiency by augmenting professional schedulers with schedule optimization algorithms, target cash spend constraints, and easy what-if scenarios. These are all packed into a simple Primavera P6 plug-in for easy setup and use.

By joining the beta program, you can influence the set of future features that would be valuable to you. Examples include: simplified weather impact integration, automated suggested alternatives, and tools to more effectively communicate/collaborate with subcontractors.

## Program Details

Whether you are using Oracle Primavera cloud or desktop version, the Aurora plug-in will work for you. The target beta partner project is a resource-loaded (at team detail) project with a construction value of >\$20M. Participation in the 8-12 week-long program requires:

1. \$1000 cost for one annual license (90% discount on market rate)
2. Initial on-site meeting to install plug-in and train staff
3. Bi-weekly 1-hour on-site/virtual meeting with Aurora team and on-call support
4. Potential case-study and opportunity for joint owner-facing conference presentations

## Product Background

Aurora was first developed to help NASA tackle difficult, mission-critical scheduling problems. Aurora is currently used for manufacturing scheduling at Boeing, Honda, and other Fortune 500 companies.

Aurora uses artificial intelligence to encode attributes of tasks and resources and optimizes schedules against built-in and user-defined decision rules with complex constraints. These attributes are considered at key scheduling decision points instead of industry standard backward scheduling to assign the most efficient time and resource for each defined task.

When schedules are resource loaded, Aurora [outperforms the competition](#). Aurora reduced turnaround completion time 20% compared to professional Primavera schedulers and 30% compared to MS Projects.

Please contact Kartik Atyam at [katyam@stottlerhenke.com](mailto:katyam@stottlerhenke.com) for more information