

Applying a Reconfigurable Scheduling System to Large-Scale Production Scheduling

Annaka Kalton
Stottler Henke Associates, Inc.
kalton@stottlerhenke.com

Property View/Partial PERT Chart

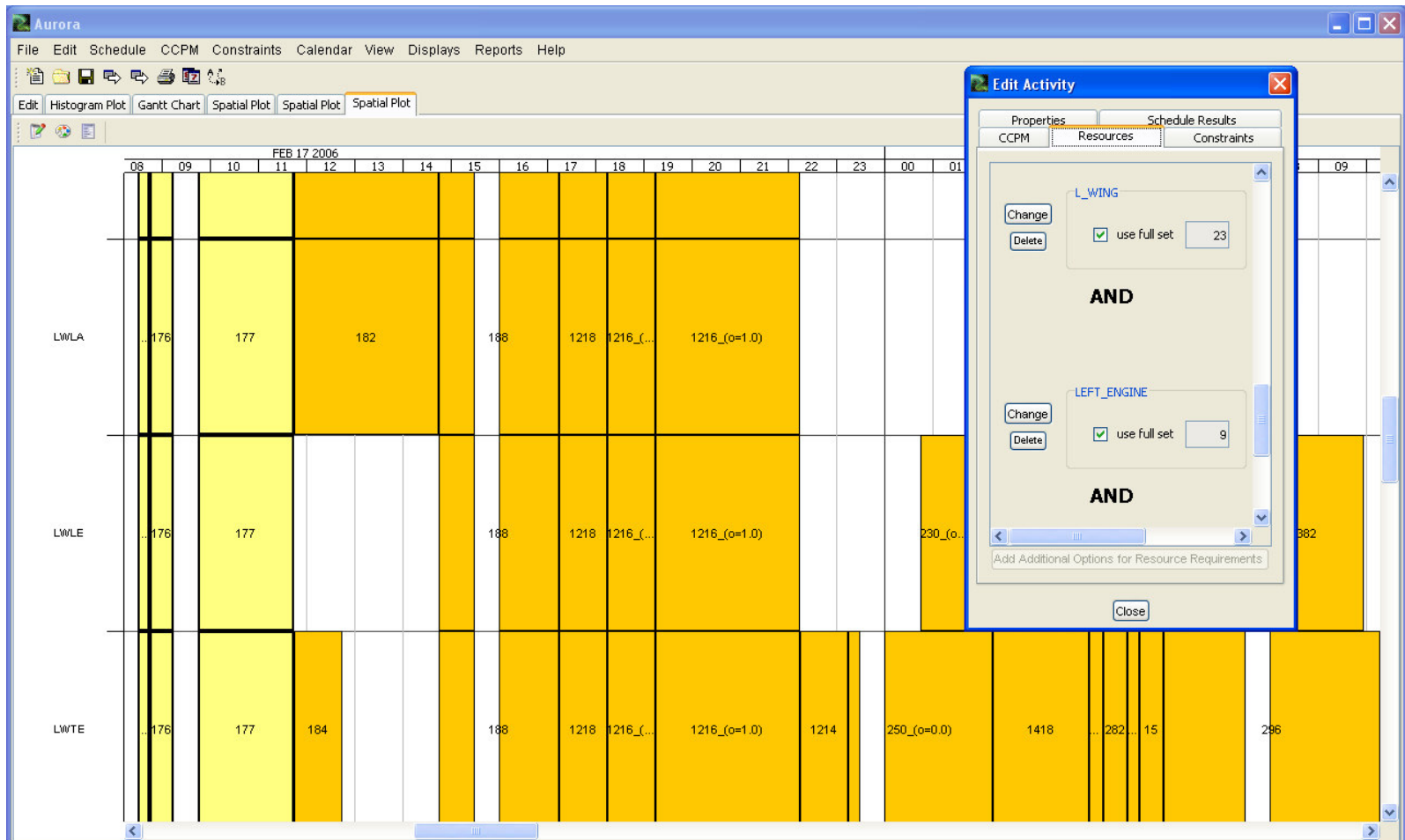
The screenshot displays the Aurora software interface, which is used for project management and scheduling. The interface is divided into several sections:

- Top Menu Bar:** File, Edit, Schedule, CCPM, Constraints, Calendar, View, Displays, Reports, Help.
- Toolbar:** Contains icons for file operations (save, print, etc.) and editing.
- Left Panel (Tasks):** A list of tasks with checkboxes. The first task is "Measure fin root surface".
- Properties Panel:** A table with two columns: Name and Value. The selected task is "ip Bundle to General Lighting AFT Connections".
- Right Panel (PERT Chart):** A Partial PERT Chart showing a network of activities and their dependencies. The chart is rendered in red lines on a white background.
- Bottom Panel:** Contains buttons for "Add Activity", "Remove Activity", "Delete Constraint", and "Edit Slots". It also includes a "Constraints" section with checkboxes for "Hide unselected" and "Highlight selected".

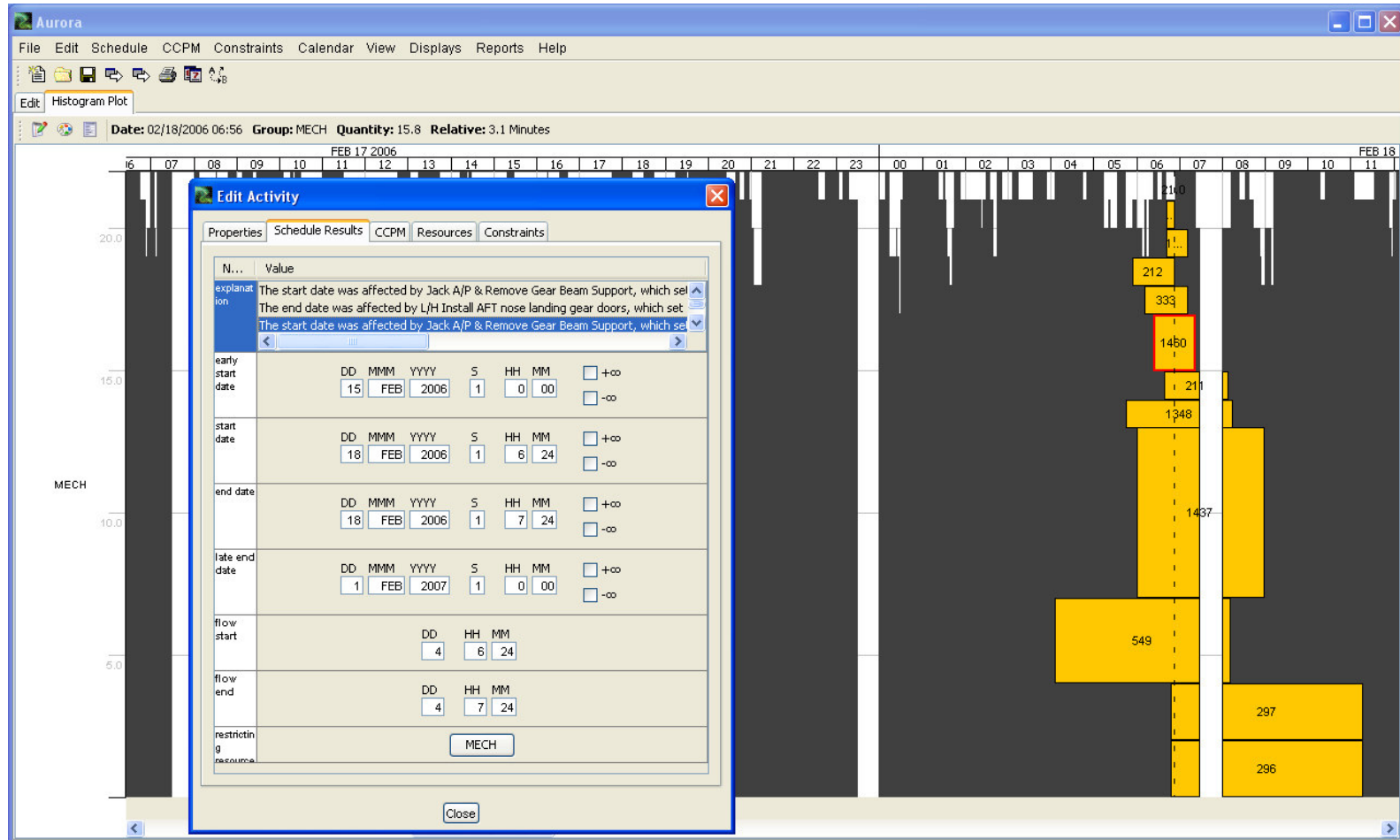
Properties Panel Data:

Name	Value
name	ip Bundle to General Lighting AFT Connections
IP Number	FAD2BIECN002A
id	1634
description	None
calendar	Calendar 1
schedule method	forward schedule
duration	30 minutes = 0:30 hours
safe duration	0.5
aggressive duration	0.5
work package ID	IEC
risk	
can break across days	<input checked="" type="checkbox"/>
can break across shifts	<input checked="" type="checkbox"/>
shift end offset (minutes)	

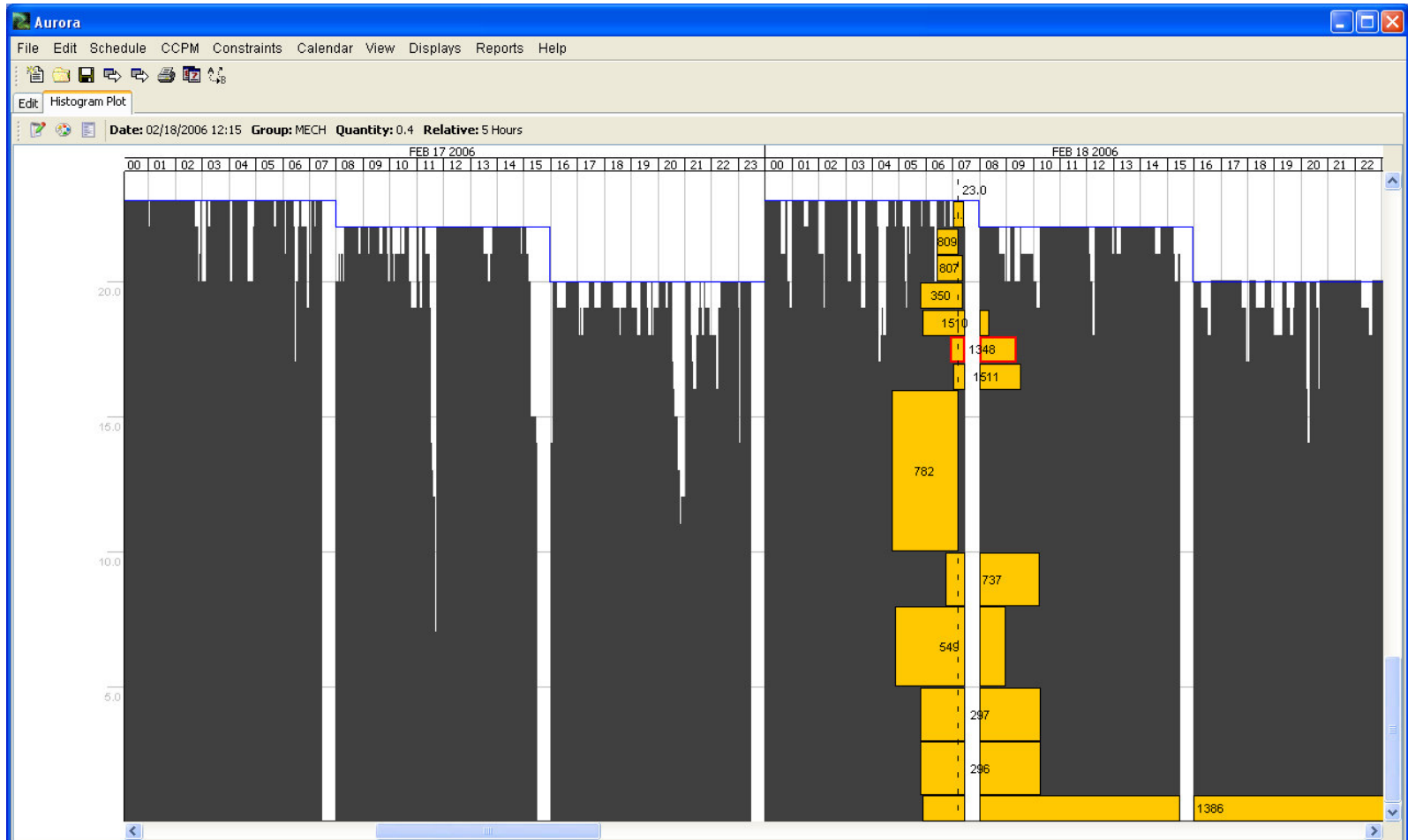
Cross-Resource Comparison



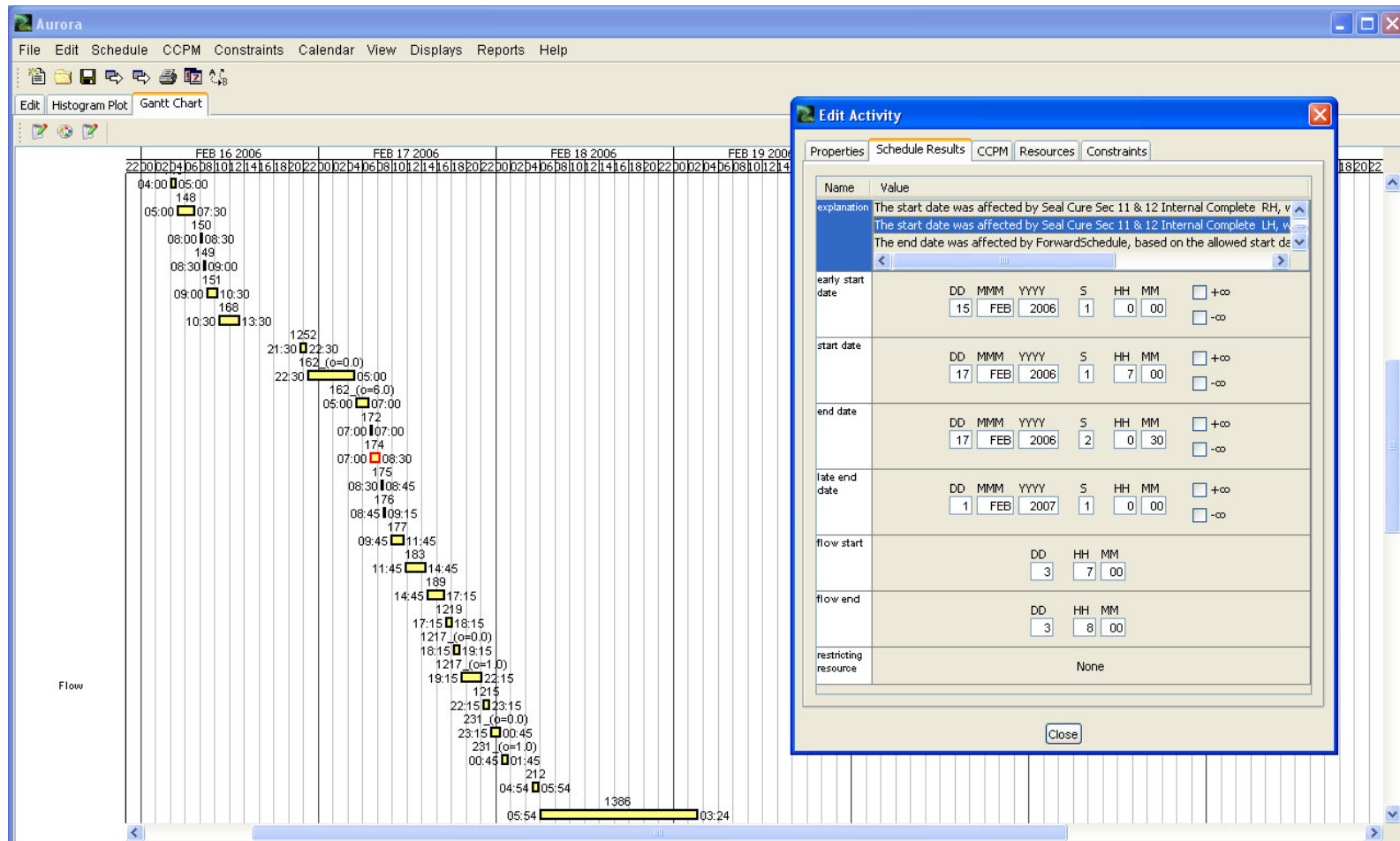
Histogram Detail/Activity Dialog



Histogram with Variable Capacities



Gantt Chart Filtered on Dependent Elements



Gantt Chart with Mechanic Clients/ Resource Delay Explanation

